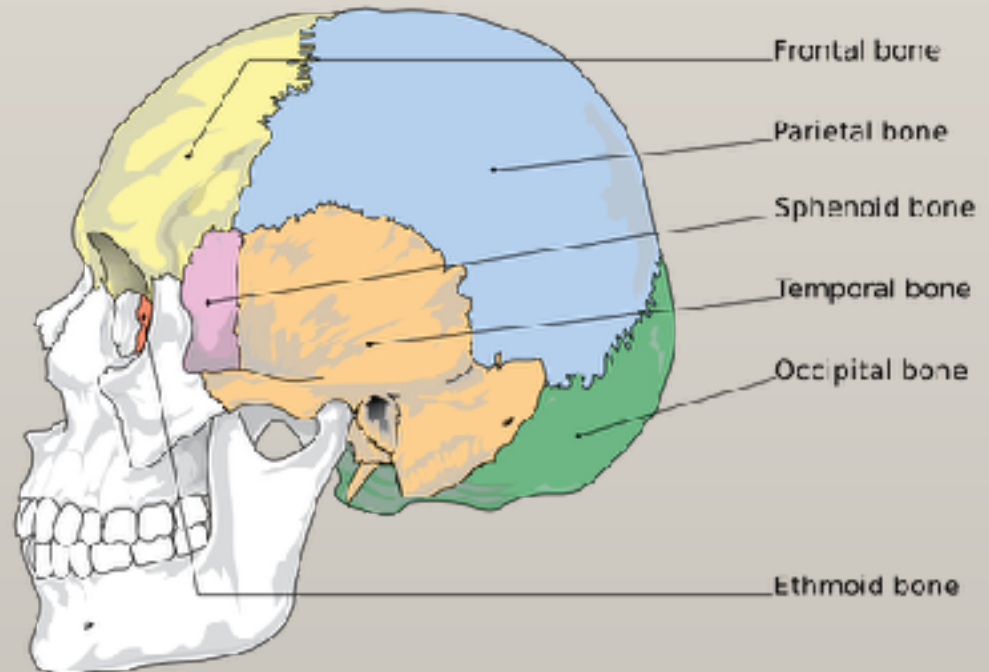


# A SUTURAL APPROACH TO OSTEOPATHY IN THE CRANIAL FIELD



Indianapolis, IN

September 14-16, 2018

24 Hours CME

This 24-hour introductory cranial course will focus on a biomechanical approach to cranial diagnosis and treatment that can be used quickly and effectively to treat patients for sutural cranial dysfunctions. This cranial approach has been effective in teaching osteopathic cranial manipulative medicine to both osteopathic and allopathic medical students, residents and practicing physicians. Unlike the membranous cranial approach, it is not hindered by suture dysfunctions. After sequencing the dysfunctions of the cranium, when a key sutural dysfunction is released, secondary sphenobasilar strain patterns resolve, limiting the need for the time consuming traditional membranous approach. In addition, the sutural approach can be integrated into a busy clinical practice.

This course will address suture dysfunctions of the vault, base and facial bones, their sacral connections and sequencing of the cranial and sacral dysfunctions.

Participants should have a basic understanding of osteopathic manipulative medicine prior to taking this course.

**[WWW.INDIANAACADEMYOFOSTEOPATHY.COM](http://WWW.INDIANAACADEMYOFOSTEOPATHY.COM)**

The American Academy of Osteopathy designates this program for AAO Co-Sponsorship as meeting the criteria for continuing medical education credits awarded through the American Osteopathic Association